

MECHANICAL/ELECTRICAL/PLUMBING

M/E/P Design Services

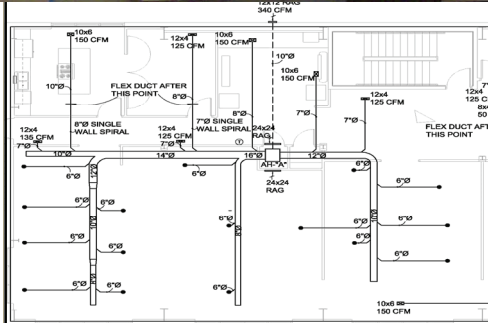
The EARTHWORKS Group provides building systems engineering to complete your project. EARTHWORKS offers a full range of structural, mechanical, electrical and plumbing design services under one roof, making us your one stop provider. Our Building Design Team takes your plans and develops detailed construction documents for the mechanical, electrical, and plumbing systems, including specifications and details and energy code analysis required by 2009 IECC. EARTHWORKS uses the latest CAD technology to find and eliminate conflicts during the design process and ensure accurate designs.

EARTHWORKS' team members are LEED certified and have the knowledge and skills to meet the increasing regulatory requirements and provide quality plans in a timely manner. Our designs are based on the latest International codes for mechanical, electrical, plumbing and gas requirements. We utilize the latest modeling software to provide quick, accurate analysis of engineered systems.

Typical Engineering services include:

- **Building Condition Assessments**
- **Shop Drawings Review**
- **HVAC System Design**
- **Electrical System Plans**
- **Lighting Layout & Design**
- **Photometric Analysis**
- **Plumbing System Plans**
- **Manual N and Manual J HVAC calculations**

We are guided by strong ethical principles and a cooperative spirit with our client, design team, construction partners and the code enforcement agencies. Careful monitoring during the construction process allows us to provide outstanding quality assurance.



FEATURED PROJECT *TEG OFFICE 2*

EARTHWORKS provided MEP and structural design services for a new 15,000 square feet, three story office in Murrells Inlet, SC. This building utilized environmentally sustainable design concepts with a goal of lower operating costs and environmental impacts. The mechanical systems utilized high efficiency HVAC equipment that reduced the monthly energy costs by 40% of the previous facility. High efficiency fluorescent lighting was utilized throughout the building to reduce heat loads and energy use. On-demand hot water also saves significant energy by eliminating storage of hot water.

Daylighting of the building also reduces lighting costs, as well as provides improved productivity of the staff. The use of laminated impact glass for all windows and the installation of a backup emergency generator allows the facility to remain operational during storm events. Hurricane survivability was a secondary design consideration, due to the coastal location.



11655 Hwy 707 Murrells Inlet, SC 29576
 843-651-7900 (o) 843-651-7903 (f)
www.earthworksgroup.com
 ✉ info@earthworksgroup.com